

HOME PROFILE FOR:
The Rittenhouse, Condominium 2505
Philadelphia, PA 19103

SALE PRICE: \$1,895,000

***Impeccable residence with expansive views of
Rittenhouse Square and the City***

- Enter the condominium into a spacious foyer with marble floor, coat closet and recessed lighting
- An open living room and dining room offers dramatic, unobstructed views of Rittenhouse Square; perimeter track lighting for displaying artwork; marble floors; and a marble window sill
- Adjacent to the living and dining room is a well appointed kitchen with ample white wood cabinetry with stainless steel knobs, a Sub-Zero side-by-side refrigerator and freezer, Sub-Zero wine refrigerator, GE wall oven and microwave, GE cooktop, Frigidaire stainless steel dishwasher, granite countertops, mirrored backsplash, built-in breakfast bar and track lighting
- There is a cozy den off the main foyer with glass pocket doors, as well as a mirrored powder room with marble floor and wood vanity with marble countertop
- The master suite provides expansive sunset city views to the west; wall-to-wall carpet; built-in dressers and entertainment unit; a dressing room with a built-in vanity, dresser and two fit-out walk-in closets; and an ensuite bathroom appointed in marble with vanity, Jacuzzi tub and oversized stall shower
- Two additional bedrooms have wall-to-wall carpet, wall closets and offer sunset city views
- There is a second full bathroom appointed in marble with a wood vanity, shower/tub with glass sliding door and separate area with stackable Whirlpool washer and dryer and storage
- The hardware on all doors has been upgraded—there is no detail left undone in this home!
- The condominiums at The Rittenhouse sit atop the five-diamond Rittenhouse Hotel; residents of The Rittenhouse enjoy the use of the same amenities as hotel guests for an additional fee, including room service, housekeeping, dog walking, health club, spa services and indoor pool

Monthly Condo Fees: \$2,655 includes snow and trash removal, water, building insurance, 24 hour doorman and concierge and chauffeur driven town car

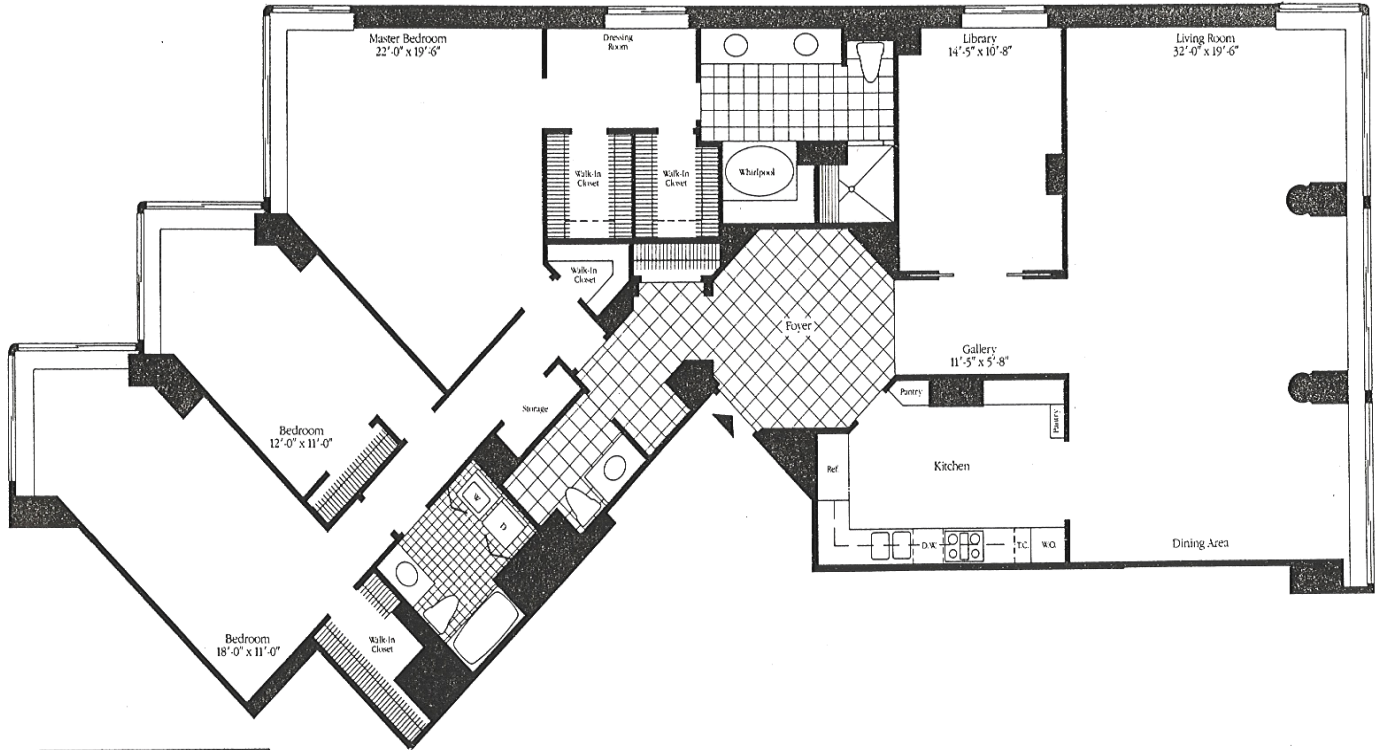
Monthly Real Estate Taxes: \$1814


Unit Square Footage: 2644 (Source – Board of Revision of Taxes Website)

Parking: Valet parking available through the building

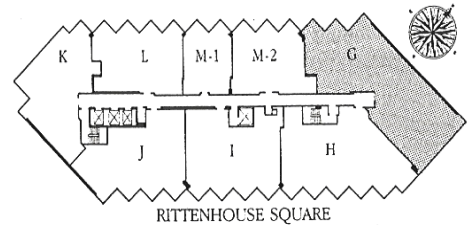
Pets: Dogs and cats allowed

Floorplan for The Rittenhouse, Condominium 2505




THE RITTENHOUSE
 CONDOMINIUM
The Square comes full circle.

Residence G
 Floors 20-28
 2644 Square Feet
 2 1 5 • 5 4 6 • 9 4 4 0



Photos for The Rittenhouse, Condominium 2505



Foyer



Living Room



Dining Room



Kitchen



Master Suite



Den