



THE DORCHESTER

ON RITTENHOUSE SQUARE



For more information: Dorchester1006.com
Allan Domb - Allan Domb Real Estate
215.545.1500 • domb@allandomb.com

Luxury Residential Condominium Home Suite 1006-1007 (Corner Unit) Facing Rittenhouse Square

Spectacular 3 bedroom, 2 bathroom contemporary home with panoramic views of Rittenhouse Square, the City skyline and South Philadelphia; 1,826 square feet of interior space with about 2,000 total square feet including two terraces.



Living Room & Dining Room Face Rittenhouse Square

The Dorchester Suite 1006-1007 Features:

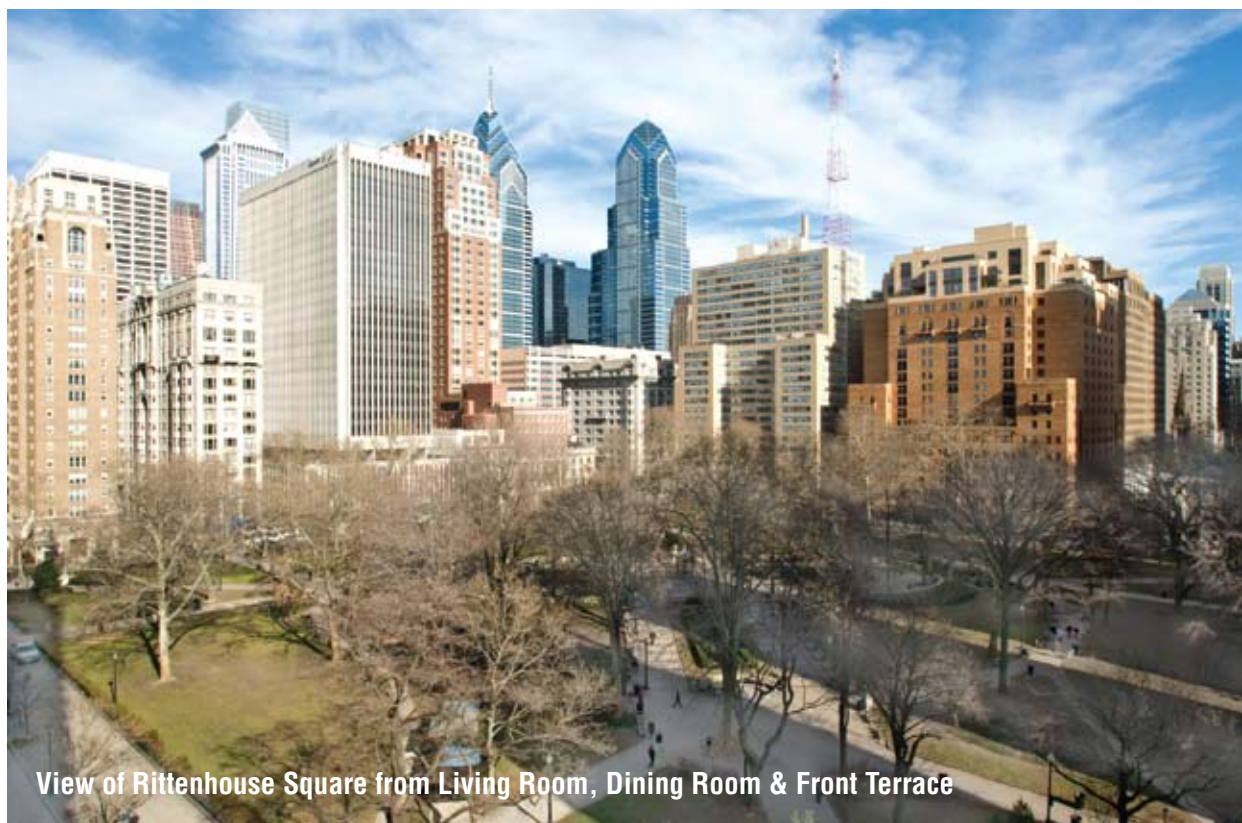
- **Overview** – Fully upgraded home including custom kitchen and master bathroom, living room, dining room, office, laundry room, two balconies, and more...
- **Upgrades** - \$350K worth of elegant and high-end upgrades including granite countertops in kitchen and master bathroom, floor to ceiling marble master bathroom, marble hall bath countertop, top of the line appliances, fixtures, hardware and cabinets.
- **Window Walls** - Wrap-around window walls facing Rittenhouse Square (East) and South, offering sweeping panoramic views.



Sundial - Rittenhouse Square



The Dorchester



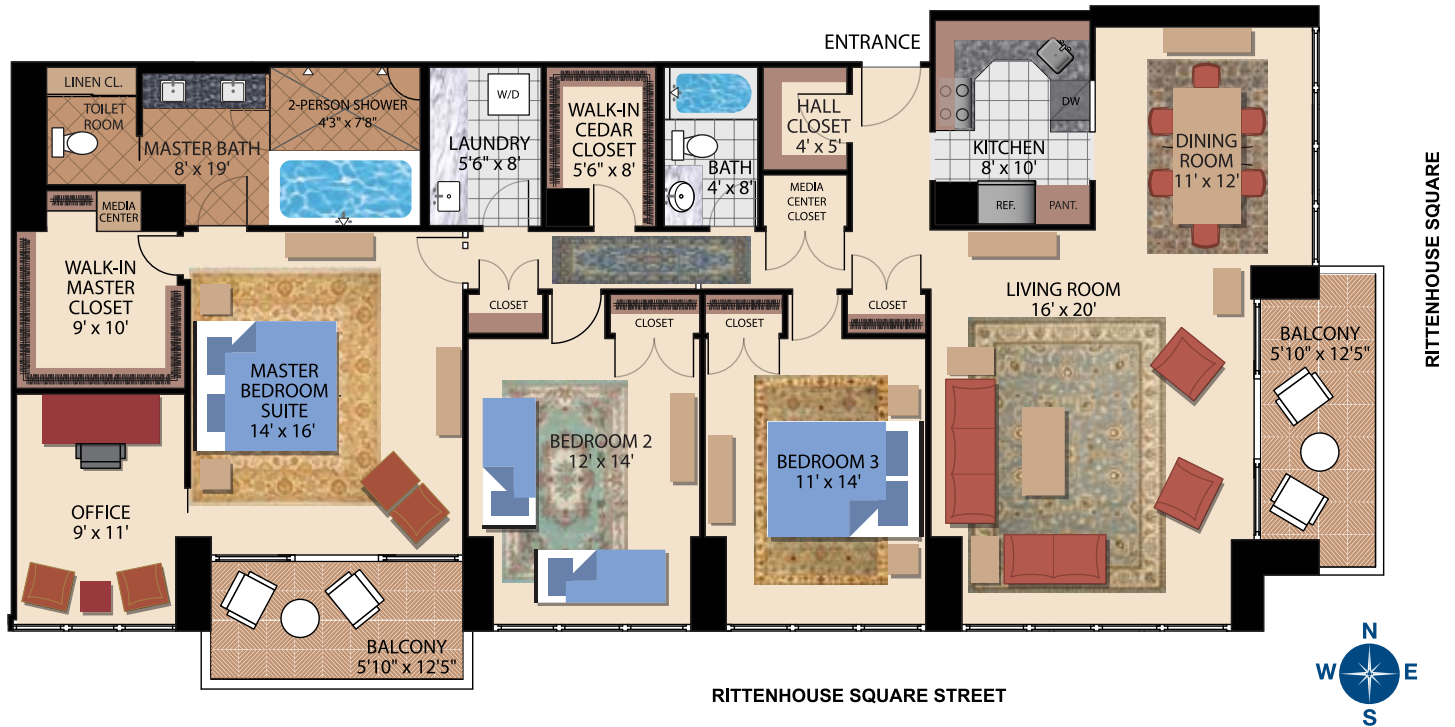
View of Rittenhouse Square from Living Room, Dining Room & Front Terrace



THE DORCHESTER

ON RITTENHOUSE SQUARE

Suite 1006-1007 at The Dorchester is a spectacular 3 bedroom, 2 bathroom contemporary home with panoramic views of Rittenhouse Square, the City skyline and South Philadelphia.



View of Rittenhouse Square from Living Room, Dining Room & Front Terrace

Style:	1960s vintage high-rise condo
Size:	1,826 interior square feet, plus 145 exterior square feet
Bedrooms:	3
Baths:	2 full
Other:	Office, laundry room, 2 terraces
Amenities:	24 hour doorman, penthouse pool, gym, garage
FHA:	Approved
Year Built:	1963
Residence Renovation:	2005



**For more information: Dorchester1006.com
Allan Domb - Allan Domb Real Estate • 215.545.1500 • domb@allandomb.com**



Master Bedroom – The large master bedroom suite includes a custom master bathroom, large walk-in closet, terrace with teak deck facing South, media closet and separate office.



Master Bathroom – The custom master bathroom features floor-to-ceiling marble, double vanity with granite countertop, open-air shower, frameless shower glass, Kohler toilet, Kohler whirlpool, custom cabinetry and separate toilet room.



Kitchen – The kitchen features a Sub-Zero refrigerator, GE Profile appliances, ceramic cooktop, granite countertops, Woodmode cabinets, pantry with pull-out drawers, Artemide lighting and glass tile backsplash.



Dining Room – The dining room offers panoramic views of Rittenhouse Square, with plenty of natural daylight and Artemide overhead lighting.



Bedroom 2 – The very spacious 2nd bedroom features large windows, a closet with custom built-ins and overhead lighting.



Living Room – The spacious living room offers wrap-around window walls with panoramic views of Rittenhouse Square and the city skyline, as well as a terrace with teak deck.



The Dorchester on Rittenhouse Square



Penthouse Pool - 32nd Floor



Rittenhouse Square at Night



Sundial - Rittenhouse Square

Suite 1006-1007 at The Dorchester is a spectacular 3 bedroom, 2 bathroom contemporary home with panoramic views of Rittenhouse Square, the City skyline and South Philadelphia.

THE RESIDENCE

- **Overview** – Spectacular 3 bedroom, 2 bath fully upgraded home (including custom master bath), featuring 2 balconies, custom kitchen, living room, dining room, office, separate laundry room, etc.
- **Upgrades** - \$350K worth of elegant and high-end upgrades including granite countertops in kitchen and master bathroom, floor to ceiling marble master bathroom, marble hall bath countertop, top of the line appliances, fixtures, window treatments, hardware and cabinets.
- **Hardwood Floors** - Hardwood floors throughout (oak parquet and bamboo).
- **Premier Location** - Premier (sunny) side of The Dorchester with daylight and permanent unobstructed views.
- **Views** - Beautiful tree-top view from 10th floor with full unobstructed views of Rittenhouse Square, the city skyline and South Philadelphia.
- **Terraces** - 2 custom teak terraces, about 75 square feet each.
- **Closets** - Custom closets throughout home.

THE BUILDING

- **Location** - Most desirable location for a high-rise residence on Rittenhouse Square (Southwest corner).
- **Doorman** - 24x7x365 doorman and concierge.
- **Valet Parking Garage** - 24x7x365 valet parking in private underground garage.
- **Condo Fees** - Condo fees include all electric, heating, AC, basic Comcast digital cable, as well as fitness center and weekday pool club memberships.
- **Penthouse Pool** - Large outdoor pool and sundeck on the 32nd Floor feature panoramic vistas of Philadelphia.
- **Fitness Facility** - Fitness center on-site with various cardio machines and weights.



Scan this QR Code with your smart phone to see our Web site

The owners of The Dorchester Suite 1006-1007 reserve the right to make modifications and changes to the information contained herein without notice. The renderings, photos and sketches are representational and may not be totally accurate. The scale, dimensions, layouts, specifications, views, materials, square footage, and spatial relationships shown are only approximations. Although deemed accurate, the information, descriptions and data contained herein is subject to normal construction variances, construction tolerances, errors, omissions and changes without notice. © 2014, Jon Bari. All Rights Reserved.



**For more information: Dorchester1006.com
Allan Domb - Allan Domb Real Estate • 215.545.1500 • domb@allandomb.com**

THE DORCHESTER
ON RITTENHOUSE SQUARE